

# TOP REASONS WHY PIPE DREAM WILL BE YOUR GO-TO ROBOT.

# PIPE DREAM™

## Affordable Subscription Model

- Robot As A Service (RaaS) model
- Flexible subscription plans to fit your budget & schedule demand
- No up-front costs or capital
- Can be easily scaled at any time to meet your needs
- No surprise-added maintenance \$\$\$
- Flexible leasing increases production throughput 2X-3X with access to more systems for shorter time periods

## 360° Pan-Tilt-Zoom (PTZ)

- Increased inspection output with comprehensive data presentation
- Can be recreated and/or adjusted to meet specific customer needs
- Done in post-inspection phase, saving hours in-field and thousands of dollars

## Single Pass Video Inspection

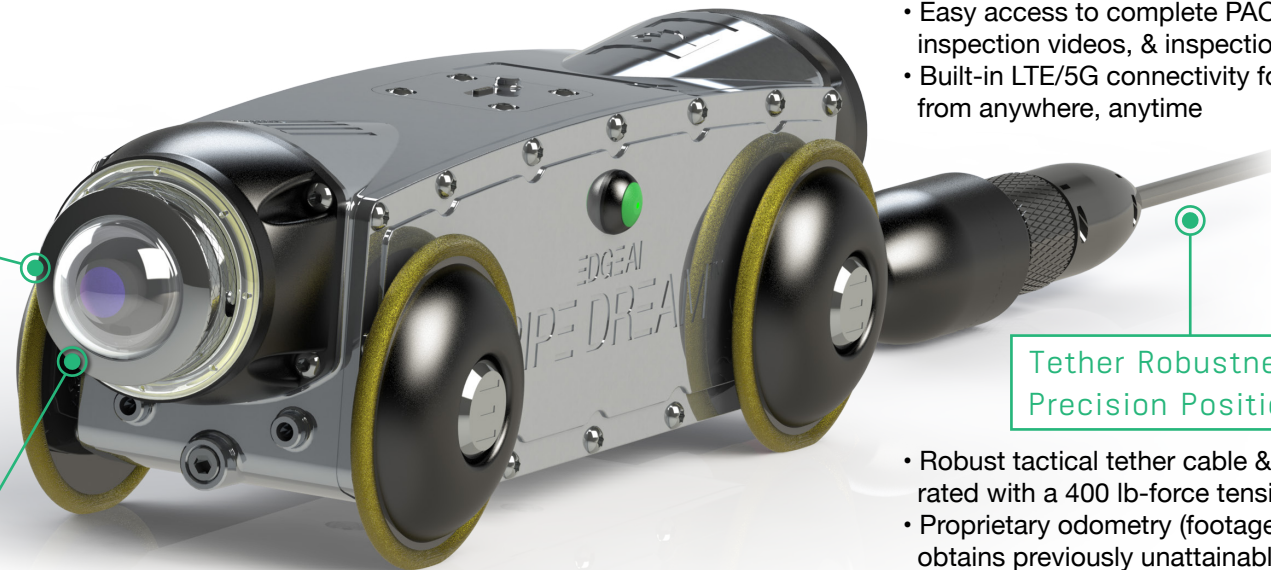
- High quality, low-latency, live 2K/4K HD video streaming & recording
- 360° panorama capture means nothing is ever missed or needs to be redone
- No extensive PACP coding experience required

## Highly Portable: No Truck Required

- 100% man portable; entire system only weighs 40lbs in total
- Easy to deploy in hard to reach areas, including easements where trucks cannot go
- 6"-24" pipe capability

## Cloud-Based Customer Portal

- Configure your own custom client portals to allow client access to any inspection 24/7
- Secure, centralized data, payment, & fleet management
- Direct Robot-to-Cloud upload; no USB or harddrive needed
- Easy access to complete PACP reports, inspection videos, & inspection header info
- Built-in LTE/5G connectivity for easy upload from anywhere, anytime



## Tether Robustness & Precision Positioning

- Robust tactical tether cable & a connector rated with a 400 lb-force tensile strength
- Proprietary odometry (footage) technology obtains previously unattainable sub-inch level positioning accuracy

## Flexible Usage & Highly User Friendly

- Options of Live View, download recorded video, code it yourself, or we can code it for you
- Eliminate costly downtime & opportunity lost

## Maintenance-Free

- No maintenance & repair fees
- Rapid replacement guarantee
- Automatic **hardware & software** updates to ensure the latest technology, always